

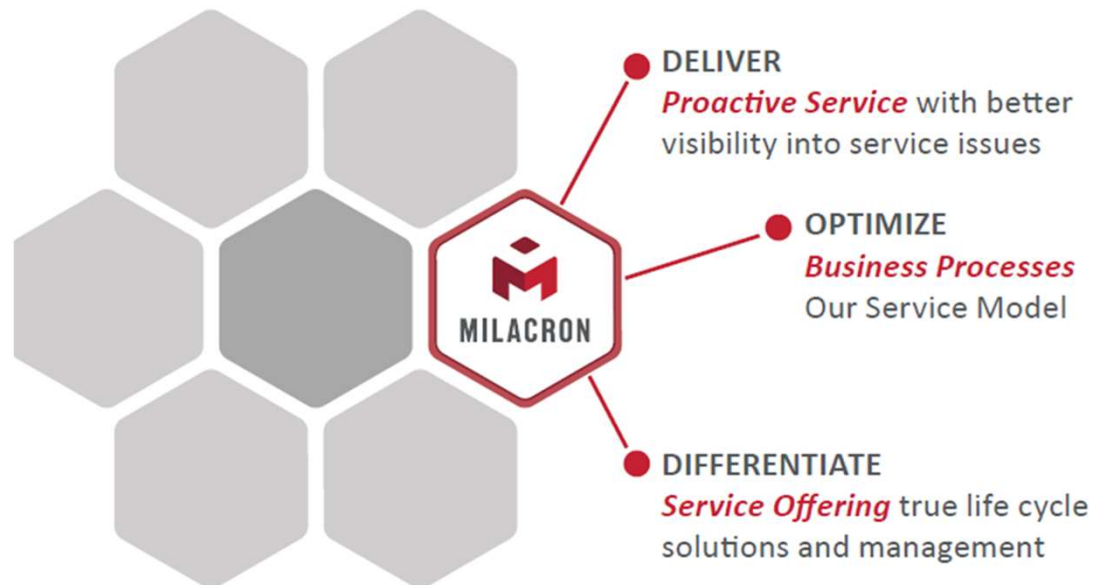
# M-Powered and Courtesy+



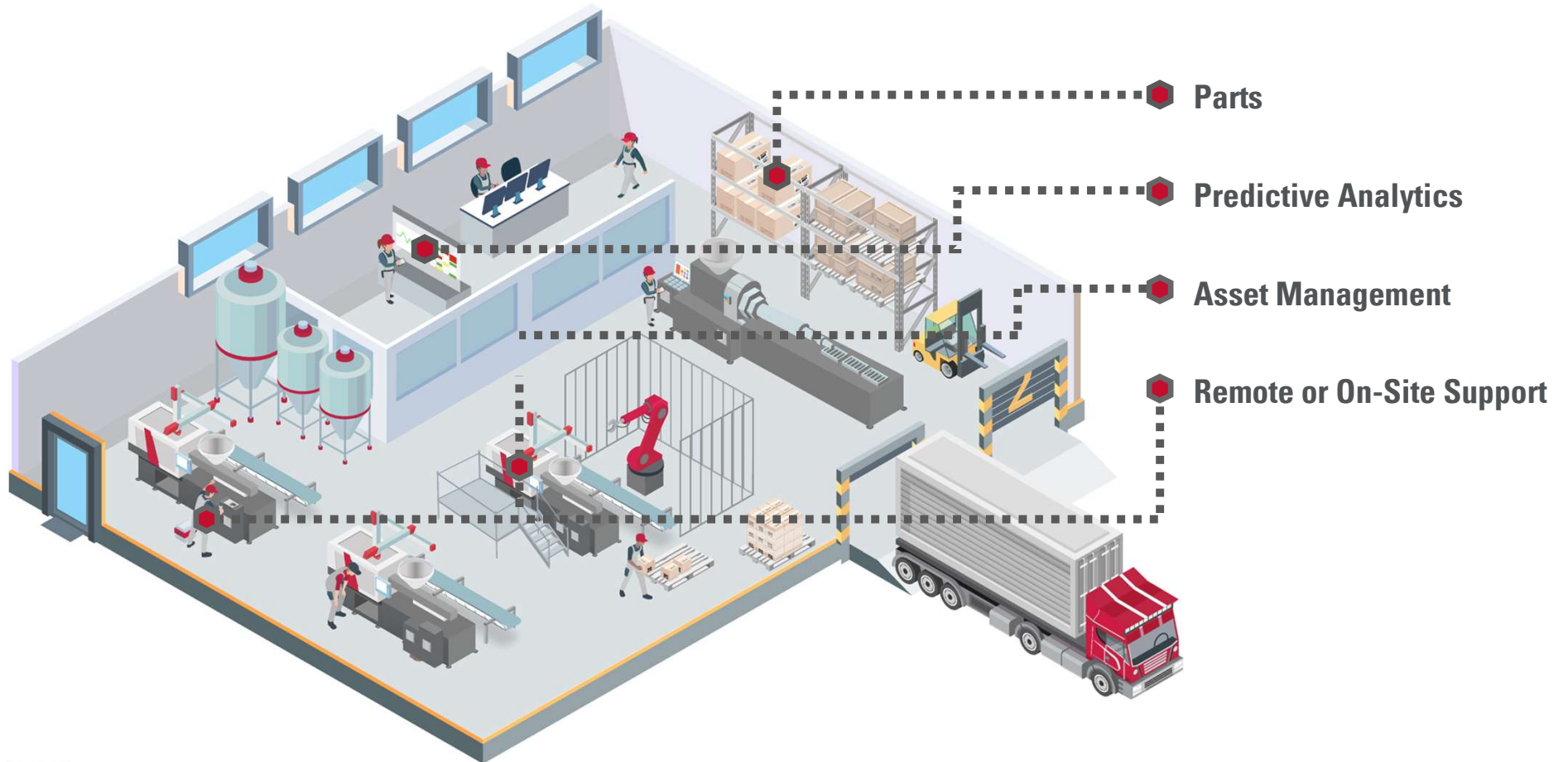
# WHY?

## Institute Change at our Customers

- Change from reactive break-fix OEM, to proactive lifecycle solution provider
- Change from chasing & throwing parts at a problem, to quick resolution via remote support
- Change from yesterday mindsets to tomorrow's solutions



# COURTESY+ & M-POWERED IIoT SOLUTIONS



# M-POWERED OFFERINGS



## Production Monitoring

- **Asset & Workcell monitoring**
- **Automated OEE delivering a reliable truth system**
- **Scalable platform with built-in integration tools**
- **Customizable maintenance, downtime and process monitoring applications**



## Predictive Analytics

- **Real-time recommendations on a growing number of machine components**
- **Gain actionable insights quickly leveraging a global fleet**
- **Lifetime monitoring of asset when the connection to M-Powered is active**



## Remote Service

- **Instant access to experienced technicians**
- **Reduce downtime durations by up to 50%**
- **Secure access to operator screens for advance support**
- **Resolve 40% of hydraulic, electrical and control issues**

# PRODUCTION MONITORING

## Realtime Monitoring of Shop Floor

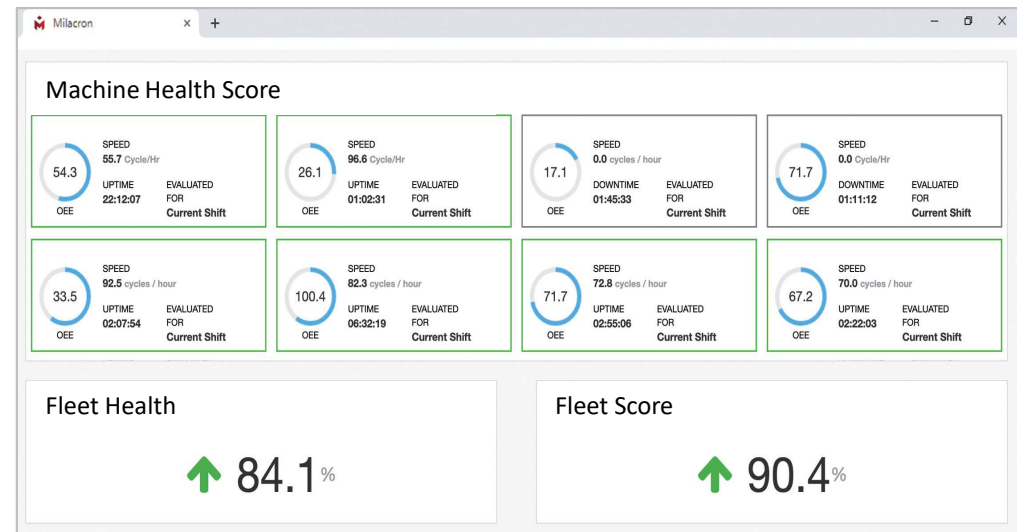
- Automated OEE data collection and reporting
- Mobile applications to view entire production in simple views
- Intelligent production historian offers quick access to machine data for runtime analytics



# PREDICTIVE ANALYTICS

## Prevent Downtime Before it Happens

- Predict failures of screws, screw tips, heaterbands, and hydraulic pumps
- Easy to use machine health dashboard and alerts/monitors
- Order parts “Just In Time” compared to carrying large on-hand inventory

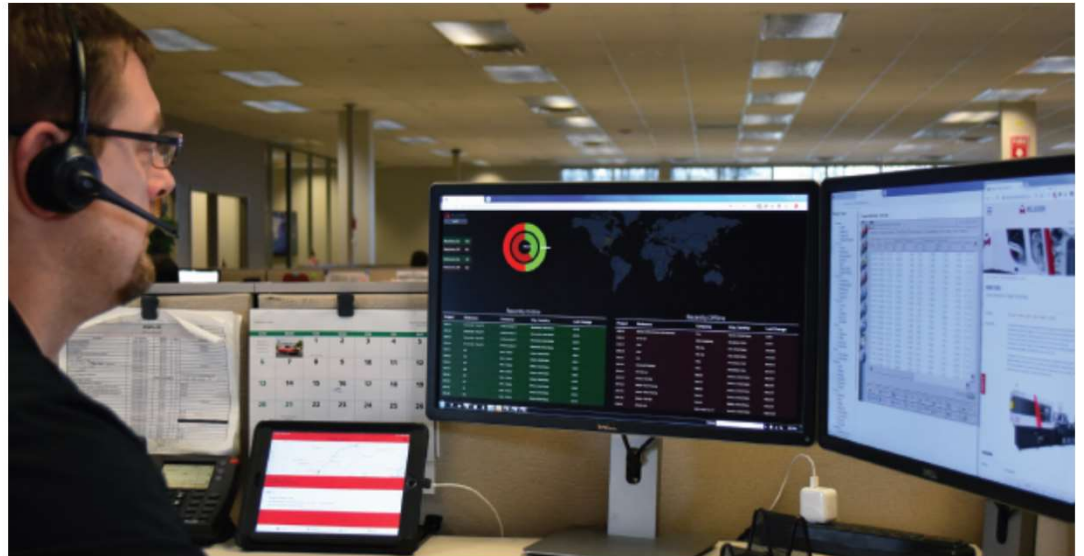
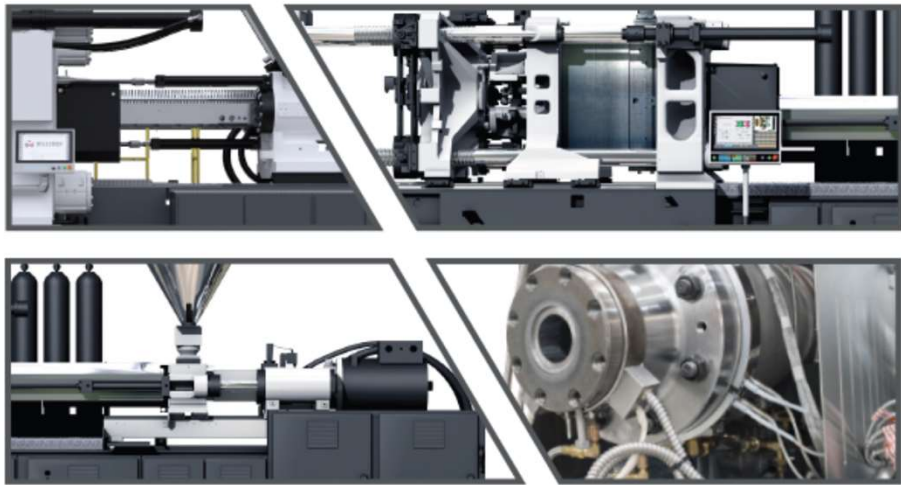




# REMOTE SERVICE

## Reduce Downtime with Instant Access

- Increase machinery uptime by 50% with remote technical support
- Secure remote access to operator screens
- Eliminate back-and-forth phone calls for diagnostics



# COURTESY+ OFFERINGS



## Machine Assessment

- Level 1
- Level 2



## Preventative Maintenance

- Bronze (Annual)
- Gold (Quarterly)
- Platinum (Monthly)



## Service Labor Agreement

- Parts rebate designed program



# MACHINE ASSESSMENT LEVEL 1

## Milacron Level 1 Courtesy+ Inspection Program

- No Charge (T/E Excluded)
- Can be done on ANY brand machine
- 40 Question Pass/Fail visual inspection
- Standard formatted report provided



CI-001244

- [Close Window](#)
- [Print This Page](#)
- [Expand All](#) | [Collapse All](#)

Customer		ShipTo Account	345328
Asset	H45A0100014	Machine Alias	IM01
Product Model	MM880 TON	Technician	Joe Mason
Control Type	Xtreem (obsolete)	Inspection Date	6/8/2021
Age	20.5	Courtesy Inspection Name	CI-001244
Courtesy Inspection Name - Legacy	CI-001391		
Check condition accessible safety devices.			
G1 Accessible Safety Devices	Broken/missing guarding		
G1 Comments			
Check toggle sprockets and toggle set screws.			
G2 Toggle Sprockets and Set Screws	NA		
G2 Comments			
Check timing belts or chain.			
G3 Timing Belts or Chain	NA		
G3 Comments			
Check spring steel and tie bars.			
G4 Spring Steel and Tie Bars	Pass		
G4 Comments			
Check lube system.			
G5 Lube System			

# MACHINE ASSESSMENT LEVEL 2

## Milacron Level 2 Courtesy+ Inspection Program

- \$2,250 per machine + T&E
- Includes Level 1 visual plus:
  - Machine calibration verification
    - Pressures
    - Speeds
    - Positions
    - Temperatures
    - Voltages
  - Base Level and Clamp Parallel check
  - Detailed machine report out
  - Rebuild and Retrofit Proposal to repair any damage found

Injection Position Check						
Tolerance In Inches			0.005			
Stroke	Set (in)	Display (in)	Actual Gauge Reading (in)	Difference	Pass	Fail
0%	0.000			0.000		
50%	7.087			0.000		
100%	14.173			0.000		
Max Stroke						

Injection Hydraulic Pressure Check				
Parameter	Set Point	Actual	Difference	Tolerance in PSI
Injection Pressure Test 1 25%	635		-635	50.00
Injection Pressure Test 2 50%	1269		-1269	50.00
Injection Pressure Test 3 100%	2538		-2538	50.00

Parameter	Set Point	Actual	Tolerance	Pass	Fail
Back Pressure Test @ 25%	125		-125		
Back Pressure Test					
Back Pressure Test					

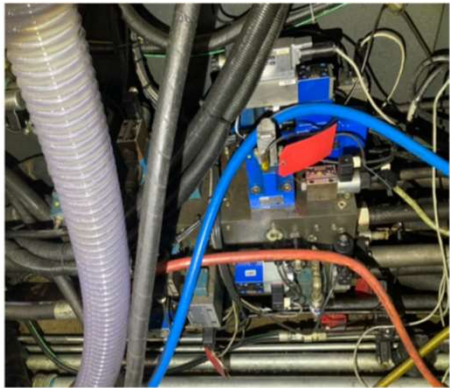
**PRESS IM16 - S/N H45A0100006**


Machine Pres	
Max Pressure	

PQ Manifold Leaking



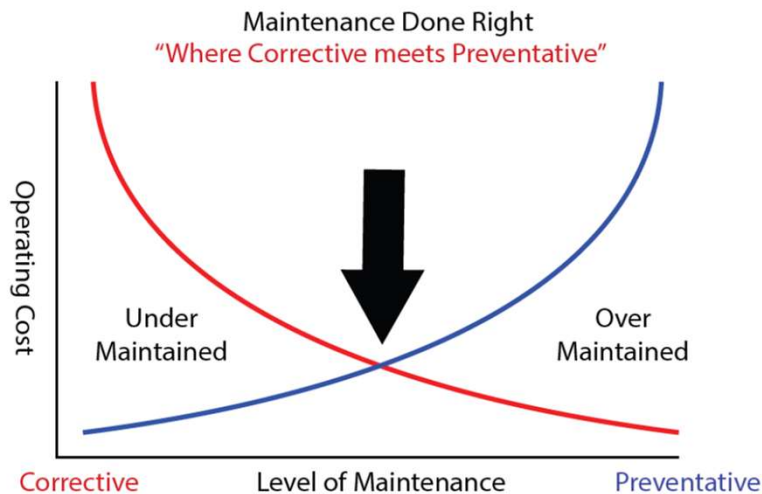
Loose (Hanging) TC Wires



# PREVENTATIVE MAINTENANCE PROGRAM

## Maximize machinery uptime, productivity & reliability

- 3 levels to choose from: Monthly / Quarterly / Annual
- Reduce the difficulty of hiring, training & retaining technicians, or supplement existing maintenance staff
- Comprehensive maintenance plans based on machine specific operator manual



CUSTOMER  
ANYWHERE, OH



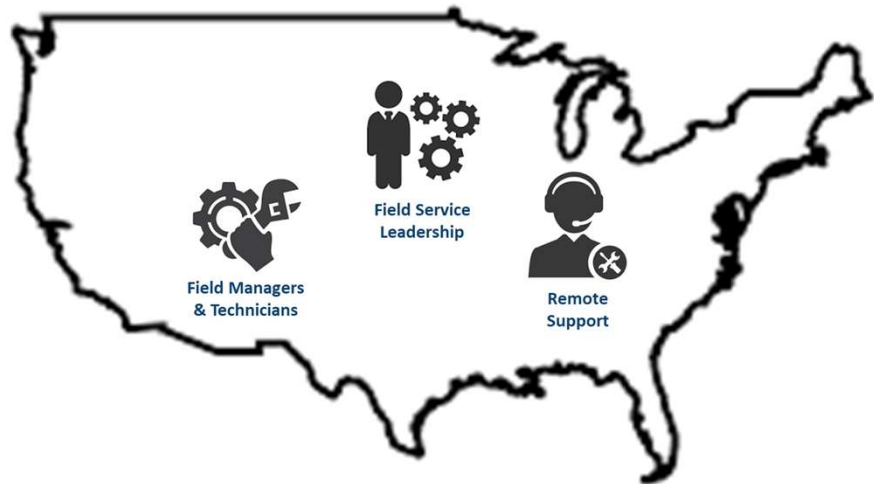
June 6, 2022

PROPOSAL NO. PM-003	
Package Description Hydraulic PM Plan, 310-1500tons	
Category	Action/Component
<b>Monthly Activities</b>	
Action	Coat ejector plate guide rods
Action	Lube Skates
Action	Lube Skates
Action	Lube Manual Fittings
Check	Auto Lube
Action	Electrical Cabinet Air Filter
Check	Check Strain Rods
Check	Check Jam Bar
Check	Check heat exchanger anode
Check	Inspect Limit Switches
Check	Check Transformer Voltage
Check	Check Motor Connections
Check	Check PLC Connections
Check	Check Fuses
Check	Check Heater Bands and Barrel Cover
Check	Check Lock Nut Alignment
Check	Check Hoses
<b>Quarterly Activities</b>	
Action	Oil Sample
Check	Check Breathers
Action	Filter Change
Check	Clean heat exchanger strainer
Check	Check Wiring, Terminals, Connectivity
<b>Half Year Activities</b>	
Action	Lube Motor Bearings
Check	Check pressure settings
<b>Yearly Activities</b>	
Action	Level/Parallel
Action	Platen Parallelism
Action	Calibration Verification
<b>PM Plan Schedule</b>	
Platinum	12 visits covering monthly items. 4 of these visits will cover quarterly items. 2 of these visits will cover half year items. 1 visit will cover yearly items.
Gold	4 visits covering monthly and quarterly items. 1 of these visits will cover monthly, quarterly, half year, and yearly items.
Silver	2 visits covering monthly, quarterly, and half year items. 1 of these visits will cover monthly, quarterly, half year, and yearly items.
Bronze	1 visit covering monthly, quarterly, half year, and yearly items.
<b>Pricing Summary</b>	
Platinum	\$15,392
Gold	\$8,625
Silver	\$6,088
Bronze	\$4,469

# SERVICE LABOR AGREEMENT

## Get rebates for using Milacron Field Service

- Annual contract based upon anticipated hours
- Rebates based upon actual hours used
- Blanket PO provides immediate service visit scheduling



<u>Volume Tier of Qualifying Hours Invoiced</u>	<u>Applicable Rebate Credit Deduction</u>
100 - 250 hours	\$15.00/hr (Up to \$3,750 potential rebate)
251 - 750 hours	\$25.00/hr (Up to \$18,750 potential rebate)
751 – 1000+ hours	\$35.00/hr (Up to \$35,000 potential rebate)



# Questions?