



**SOLUTIONS. TECHNOLOGY. SERVICE.**



**MILACRON®**

**REBUILDING AND  
REMANUFACTURING**



### **ALL REBUILD ARE WARRANTED AS NEW**

When we rebuild a product for you, we warrant that product to be free any material and/or manufacturing defects. If it is a partial reline of a barrel, the new portion that is installed is warranted never to separate or spin for the life of the component.

### **ALL REBUILD RETURNED TO ORIGINAL SPECIFICATIONS**

All components are returned to original specifications when rebuilt, ensuring a proper fit between the barrel and feedscrew.

### **EXPEDITED DELIVERIES IN THOSE BREAKDOWN SITUATIONS**

In our rebuilding service, many times we can respond to an emergency by providing a 2-3 day turn-around on a repair.

### **STOCKING PROGRAM OFFERED WITH REBUILDING PROGRAM**

To accommodate those with limited stocking space, we now offer a program which includes stocking your rebuilt component until you have a requirement for it.

### **PROCESSING FLEXIBILITY**

When you encounter a situation where your process requires running heavily filled or extremely corrosive materials, many times we have the ability to upgrade your components to accommodate those conditions.

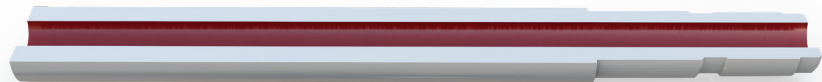
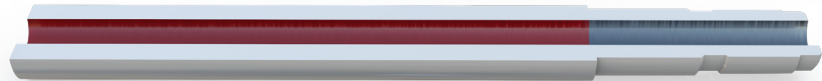
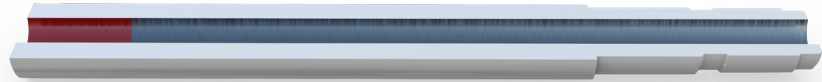


## BARREL REBUILDING OPTIONS

The stroke length liner is located in the mold end of the barrel and extends a few inches past the maximum stroke of the injection unit. This length liner is used generally when most of the barrel wear is confined to the area within the travel of the shutoff valve.

The full flight liner extends from the barrel output end to the feedthroat opening, encompassing the entire flighted length of the feedscrew. This is a very popular option because often there is significant wear in the compression section, but little to no wear past the feedthroat opening.

The complete reliner runs the entire length of the barrel. This line is most cost-effective when upgrading to an abrasive or corrosive resistant liner.



### LINERS FOR ALL APPLICATIONS AVAILABLE

*Standard Applications: Iron Boron Bi-metallic*

*Abrasive Application: Carbide/CPM 10V*

*Corrosive Application: Nickel Boron Bi-metallic*

## FEEDSCREW REBUILDING OPTIONS

The rebuilding of a feedscrew offers a variety of options. When a feedscrew is rebuilt, all root channel damage, pilot damage, thread damage and bearing areas are repaired. Feedscrews can be returned to the original specifications or they can be upgraded to be used in corrosive or abrasive applications. When upgrading feedscrews, there are various coatings that can be applied. The following are some of the options:

### ABRASIVE APPLICATION

Flight Following:

- Colmonoy
- Stellite

### CORROSIVE APPLICATIONS

- Standard chrome plating
- Triple chrome plating
- Nickel plating

Total Encapsulations available. Call for details.

