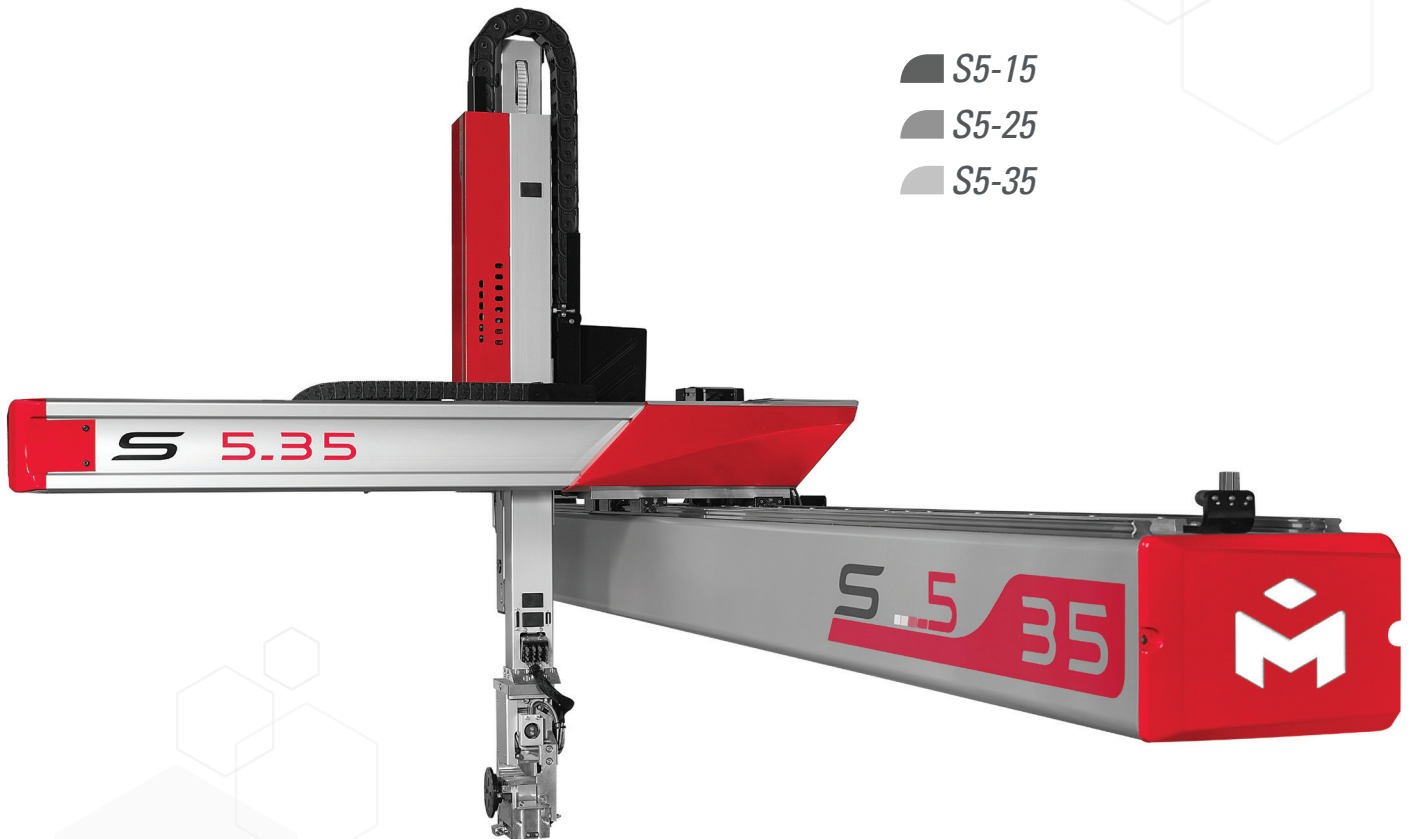


S5line

For Injection Molding Machines from 30 to 900T



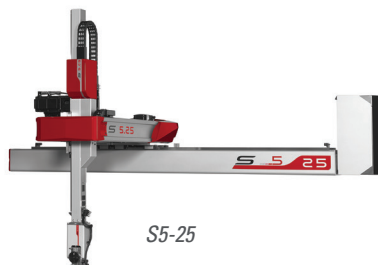
TRULY FLEXIBLE EXCELLENCE



- S5-15
- S5-25
- S5-35



S5-15



S5-25

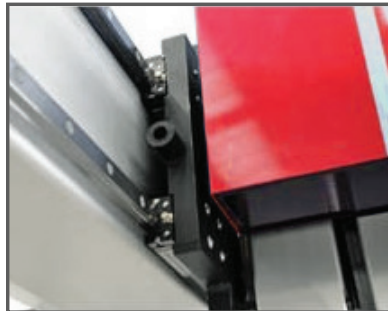


S5-35



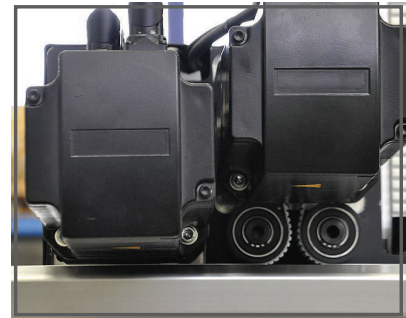
RELIABLE

S5 Line is crafted from five generations of robots. Milacron offers a high-performing robot with accomplished design.



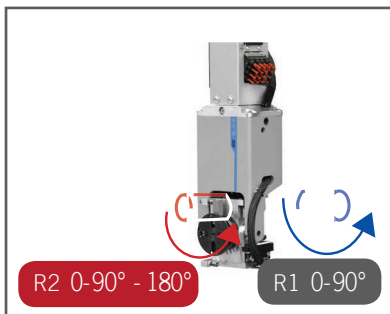
RIGID

The single-piece, frame structure and prismatic linear guide rails deliver high rigidity adapted to high accelerations of the mobile parts.



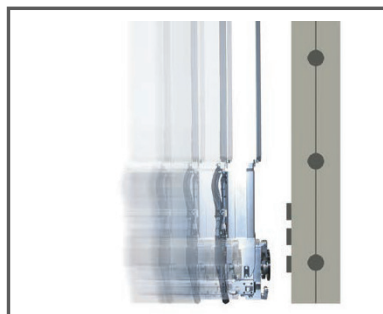
QUICK MOTORS AND CLEVER SOFTWARE

Powerful servomotors allied with a clever anti-vibration software ensure maximum accelerations and minimum intervention times.



PRECISE

S5 Line reliably carries out the most complex applications (insert placing, stacking, etc.). High-torque, standard R1 (0-90°) and optional R2 (0-90 -180°) pneumatic rotations offer great flexibility and facilitate mold access, thanks to their compact, built-in design.



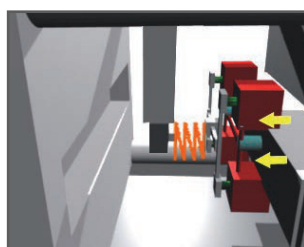
THE Y FREE FUNCTION

Available as standard, makes programming easier for parts ejection tracking and enables savings on gripper costs, thanks to a simpler design.



A CONTROL CABINET WITH AN INNOVATIVE, MODULAR LAYOUT

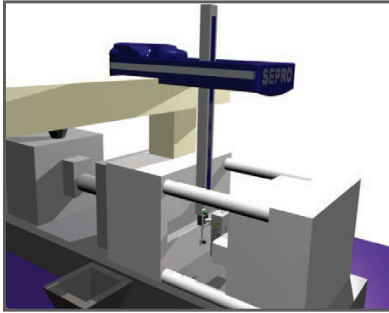
The compact beam-mounted control cabinet comes as standard on S5-15 and S5-25, and is designed to save floor space. Milacron also offers, as an option on S5-15 and S5-25, a floor-mounted control cabinet, to facilitate easier access for maintenance. Both cabinet configurations are available as standard on S5-35 which can automate moulding machines up to 800T. Choose between saving space on the floor with the compact beam-mounted cabinet, or facilitating easier access for maintenance with the floor-mounted cabinet. On all S5 Line robots, the floor mounted cabinet is necessary to drive complex applications and configurations requiring over 3 CNC axes.



UNIQUE ELASTIC UNIT (OPTION)

This mechanical unit protects the gripper and mould during part gripping settings, and softens the contact between the gripper and the moulded part in the case of small inaccuracies (a few mm) on the ejection movement or the mould opening. The wrist is mounted on a linear axis parallel to the injection axis. A corrector unit applies elastic pressure on this axis, and if the sensor detects that too much force is applied, it automatically brings the robot to a halt.

THE S5 LINE ROBOTS COMBINED WITH THE POWERFUL VISUAL 2 CONTROL MAKE IT POSSIBLE TO DRIVE AUTOMATION SYSTEMS WITH UP TO 16 AXES



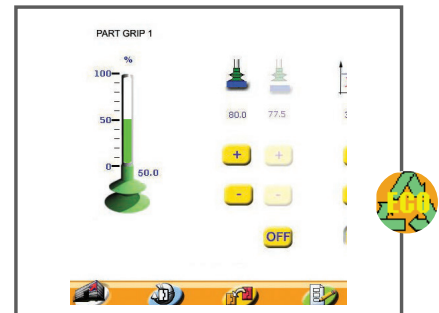
IT'S SO EASY

- View creations in 3D with the Simple Pick-and-Place Module: create a cycle by answering the questions the system asks and see the result immediately in 3D on the video.
- Fine-tuning movements in the mould made easy thanks to the joystick.



VISUAL 2: MAKE YOUR DAILY ROUTINE EASIER

- Consult the full-screen documentation at any time.
- Transfer information from one team to another using the notepad function.
- Thanks to the USB key, operators, setters, programmers and maintenance personnel have direct access to the relevant data.



TRIED AND TESTED ERGONOMICS

- Task-based navigation means users can directly access the job to be done.
- Eco Mode: after having programmed a cycle, just press one key to limit power consumption during the cycle.
- Digital vacuum switch: program and save part-grip settings for each mould (option).

EXTEND POSSIBILITIES FROM VISUAL 2 TO VISUAL 3. SIMPLY POWERFUL!

Take the simplicity of Visual 2 and add the power of Visual 3 option to drive stacking, insert placing, fabric overmoulding, vision and more operations.

POWERFUL

- The fast PLC technology at 20 m/s drives intelligent peripheral systems, including CNC axes.
- Starts with 231/240 available for downstream equipment.
- Choose the real Path Tracking option to program the flaming of the parts outline or any kind of complex extraction path of the product in the mould.

EFFICIENT

- The Digital Vacuum Switch function is standard on Visual 3, to program and save part-gripping settings for each mould.
- Use the Software Studio on PC to create and fine-tune complex programs in a familiar Windows® environment.





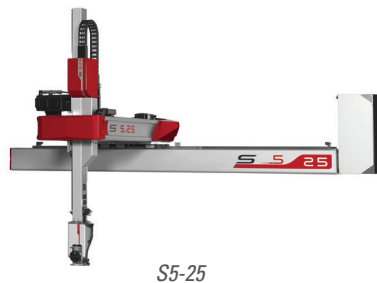
	S5 - 15	S5 - 25	S5 - 35
Mold clamping force - Metric tons	30 - 220	150 - 450	450 - 900
Horizontal stroke (mm) (1)	1500 - 4000	1500 - 6000	2000 - 9000
Maximum instantaneous speed (m/s)	4	4	3,5
Demold stroke (mm) - Transverse layout	500	700	900
Maximum instantaneous speed (m/s)	3	3	3
Vertical stroke direct (mm)	1000	1200	1400
Maximum instantaneous speed (m/s)	5	4	4 - 3,5 (HL)
Maximum load (parts + EOAT) (kg)	5 - 3 (S)	10 - 7 (S)	15 - 20 (HL)
Pneumatic rotation R1 (0 -90°)	<input checked="" type="checkbox"/>	<input checked="" type="checkbox"/>	<input checked="" type="checkbox"/>
Part grip - vacuum circuit up to:	6	8	8
Part grip - vacuum circuit up to:	6	8	8
Compact beam-mounted control cabinet	<input checked="" type="checkbox"/>	<input checked="" type="checkbox"/>	<input checked="" type="checkbox"/>
VISUAL 2 control system	<input checked="" type="checkbox"/>	<input checked="" type="checkbox"/>	<input checked="" type="checkbox"/>

OPTIONS			
Vertical telescopic arm:	-	<input checked="" type="checkbox"/>	<input checked="" type="checkbox"/>
- Vertical stroke (mm)	-	1400	1800
- Maximum instantaneous speed (m/s)	-	4	3,5
- Maximum load (parts + EOAT) (kg)	-	10	15-20 (HL)
- Low height telescopic option	-	<input checked="" type="checkbox"/>	<input checked="" type="checkbox"/>
Pneumatic rotation R2 (0-90°-180°)	<input checked="" type="checkbox"/>	<input checked="" type="checkbox"/>	<input checked="" type="checkbox"/>
Elastic unit	<input checked="" type="checkbox"/>	<input checked="" type="checkbox"/>	<input checked="" type="checkbox"/>
Floor-standing control cabinet	<input checked="" type="checkbox"/>	<input checked="" type="checkbox"/>	<input checked="" type="checkbox"/>
VISUAL 3 control system	<input checked="" type="checkbox"/>	<input checked="" type="checkbox"/>	<input checked="" type="checkbox"/>

(1) Available in 500 mm increments

S: Speed

HL: Heavy load option



- A full line of robots from 3 to 6 axis with one unique, user-friendly control
- Installations available worldwide

