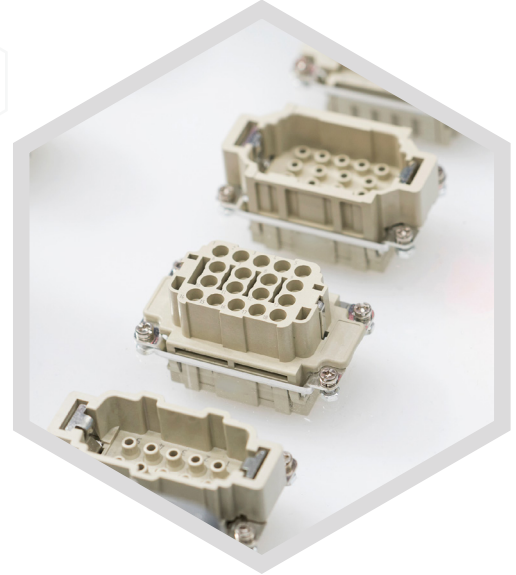


# ROBOSHOT: ELECTRICAL

High Precision Connectors, Sensors, Plugs and Terminals



Precision and repeatability are critical to plastic processing in the electrical industry. Roboshot's CNC control of the entire machine using FANUC servo motor drive technology provides micro precision of all motion. Features such as pre-injection provides better tool venting and precise metering provides the exact dosing required for high precision parts. The Roboshot's high resolution back pressure and injection control achieves tight tolerances in electrical connectors. Multi-level security access and available process range settings, along with OPC-UA communications to auxiliaries, provide a secure and complete molding cell.

# ROBOSHOT: ELECTRICAL

High Precision Connectors, Sensors, Plugs and Terminals

## Reduced mold damage

ROBOSHOT's artificial intelligent mold and eject protection provides the highest level of sensitivity for the prevention of cavity damage and broken ejector pins. AI mold protection also works on both the close and opening motions which can provide better protection to slide pins.

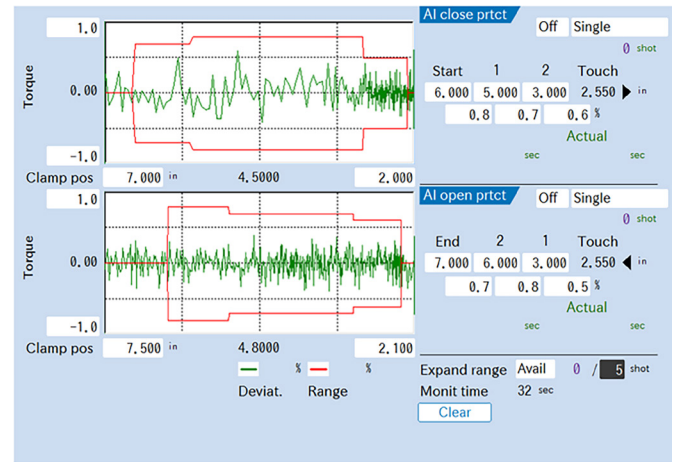
## Complex parts

- Core signal interface plug and custom sequencing using icons
- Additional servo axis for rotary tables / secondary injection
- Pneumatic, hydraulic, and Servo cores

## Screw variation and flexibility

Not only does the Roboshot allow up to eight easily interchangeable screw and barrel combinations all on one frame, but Milacron also offers a variety of different screw and barrel materials specifically designed to fit your application. From our Klearstar kits to our Wearstar offerings, the Roboshot can be customized to meet your application requirements.

- Up to 8 interchangeable barrel and screw combinations per model
- Special screw and barrel packages for over 50% glass filled and flame retardant resin



AI mold protection, close/open with manual or automatic set-up



Without AI mold protection

With AI mold protection

# REMOTE MONITORING WITH ROBOSHOT-LINKi2

LINKi2 is a product and quality management tool that can connect to all Roboshot series in real time from remote PCs or smart devices.

## Status monitor

- Achieves lower cost and higher operation rate
- Monitors power consumption

## Quality information

- Provides traceability and advanced quality analysis
- Investigates cause of failure and molding repeatability

## Diagnosis

- Alarm history
- Operation and parameter change history
- Remote operation functions

